

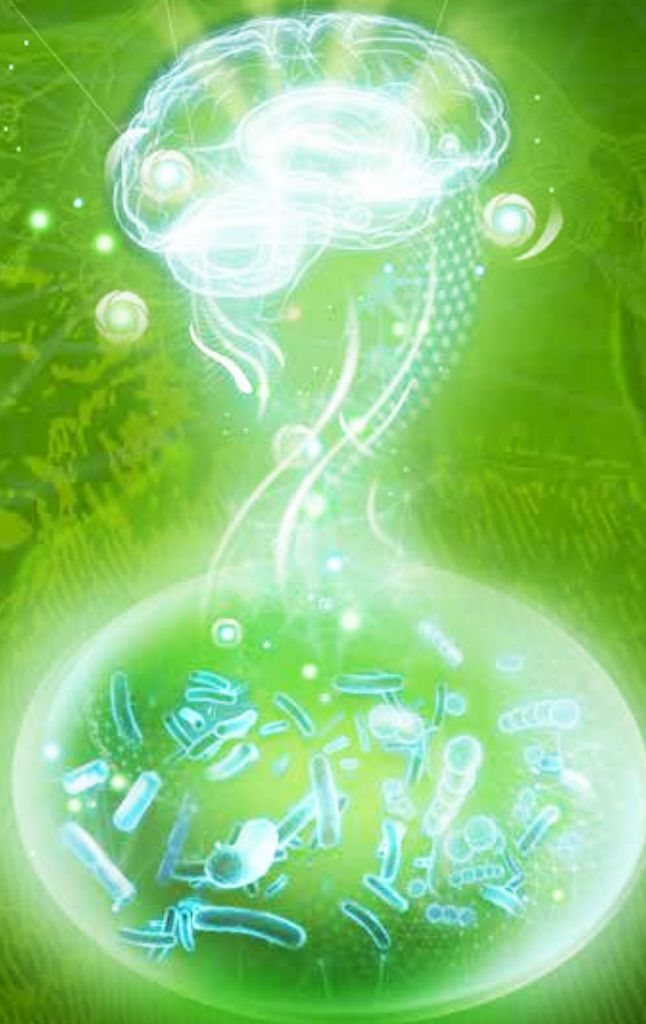


OPTIMIZE THE MICROBIOTA-BRAIN CONNECTION,
THE « **BETTER-BEING** » WAY

**FEED ADDITIVE BALANCING THE MICROBIOTA-BRAIN CONNECTION
TO ENHANCE ANIMAL POTENTIAL.**



POULTRY

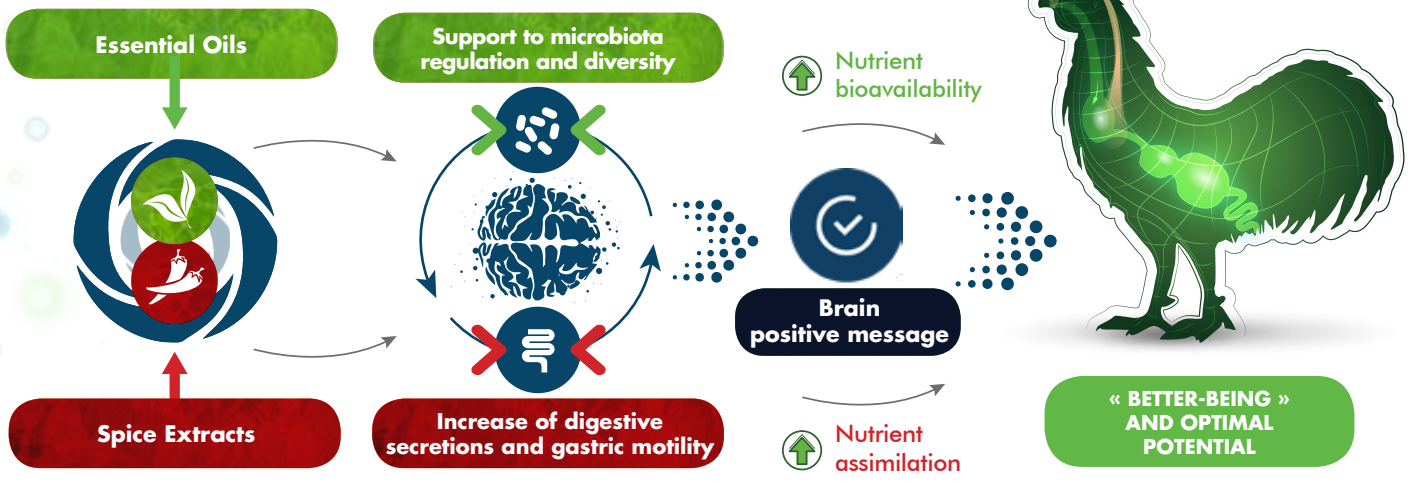


ANIMAL CARE

ACTIVE INGREDIENTS

Synergistic blend of essential oils (oregano, thyme, cinnamon etc.) and spice extracts (ginger, pepper etc.).

MODE OF ACTION



POULTRY



FEATURES

- Alternative to antibiotic growth promoters
 - Support to demedication program
- Optimized nutritional safety margins
 - Balance digestive ecosystem

BENEFITS

FOR BROILERS

- ↑ Weight gain
- ↑ Feed efficiency
- ↓ Mortality

FOR LAYERS

- ↑ Laying rate
- ↓ Downgraded eggs
- ↑ Egg weight
- ↑ Feed efficiency
- ↓ Mortality

POWERED BY PHODÉ TECHNOLOGIES



CRYSTALIK IMPREGNATION

Stability and persistence of actives
(heat treatments / production constraints)



MONOPOWDERS

Control of spices irritating properties



IPS

(Irregular Powder Structure)

Guarantee of homogeneity in-feed

RECOMMENDATIONS

- **Broilers** : 100g / MT*
from day 1 up to harvest
- **Layers** :
 - Layer chicks/pullets : 100g / MT*
from starter, grower, developer, pre-layer stages
 - Layers/Breeders : 100g / MT*
from start of laying up to the end of laying cycle
- **Turkeys** : 150g/MT**
from day 1 up to harvest

* Up to 200g/MT in sanitary challenged conditions
** Up to 300g/MT in sanitary challenged conditions

Distributed by :



PHODÉ

Improve the life

Laboratoires Phodé - Z.I. Albipôle - 81150 Terssac FRANCE
T. +33-(0)5 63 77 80 60 - phode@phode.com - www.phode.com
N° RCS 503 972 598



OPTIMIZE THE MICROBIOTA-BRAIN CONNECTION,
THE « **BETTER-BEING** » WAY

**FEED ADDITIVE BALANCING THE MICROBIOTA-BRAIN CONNECTION
TO ENHANCE ANIMAL POTENTIAL.**



RUMINANT

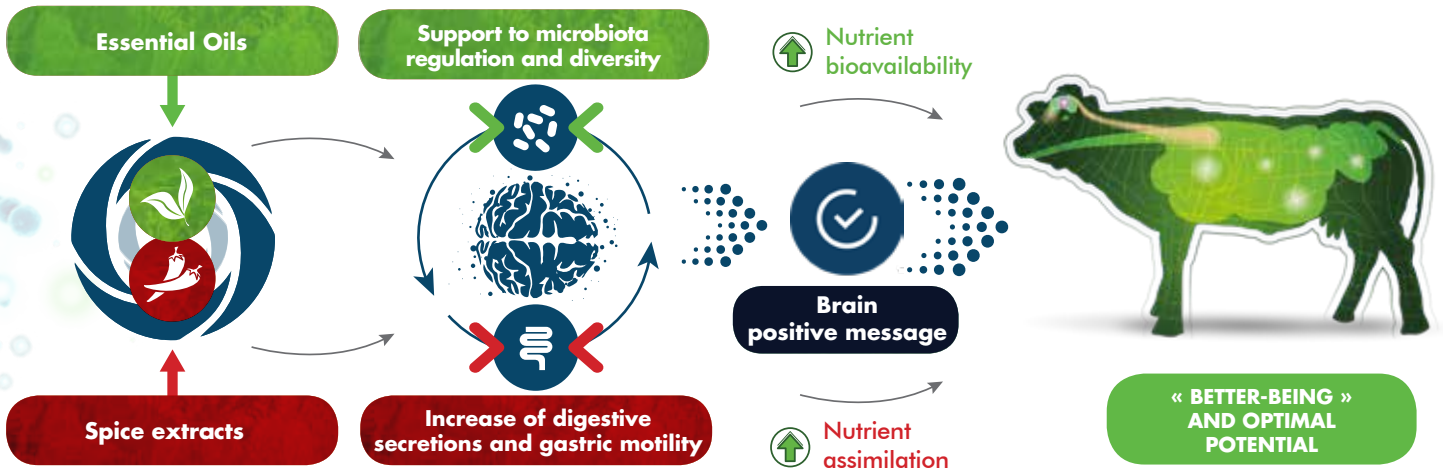


ANIMAL CARE

ACTIVE INGREDIENTS

Synergistic blend of essential oils (oregano, thyme, cinnamon, etc.) and spice extracts (ginger, pepper, etc.).

MODE OF ACTION



FEATURES

- Alternative to antibiotic growth promoters
 - Support to demedication program
- Optimized nutritional safety margins
 - Balance digestive ecosystem



BENEFITS

FOR DAIRY COWS

- ↑ Milk yield
- ↑ Milk components
- ↑ Milk quality (SCC, urea)

FOR BEEF CATTLE

- ↑ Average Daily Gain
- ↓ Feed Conversion Ratio
- ↑ Meat yield

POWERED BY PHODÉ TECHNOLOGIES



CRYSTALIK IMPREGNATION

Stability and persistence of actives
(heat treatments / production constraints)



MONOPOWDERS

Control of spices irritating properties



IPS

(Irregular Powder Structure)

Guarantee of homogeneity in-feed

RECOMMENDATIONS

- **Beef Cattle** : 1g / day / animal (70 to 180g / MTDMI)
- **Dairy Cows** : 1 to 3 g / day / animal (40 to 220g / MTDMI)
 - Close-up : 1 g / day / animal
 - Early lactation : 2 to 3 g / day / animal
 - Lactation : 1 to 2 g / day / animal
- **Ewes / Goats** :
 - 0.25 to 0.75 g / day / animal (60 to 380g / MTDMI)

Distributed by :



PHODÉ

Improve the life

Laboratoires Phodé - Z.I. Albipôle - 81150 Terssac FRANCE
T. +33-(0)5 63 77 80 60 - phode@phode.com - www.phode.com
N° RCS 503 972 598